



New Jersey Water Supply Authority Watershed Protection Programs Fact Sheet #10

Delaware & Raritan Canal Nonpoint Source Management Project Franklin Township & South Bound Brook Borough, Somerset County



Canal Facts:

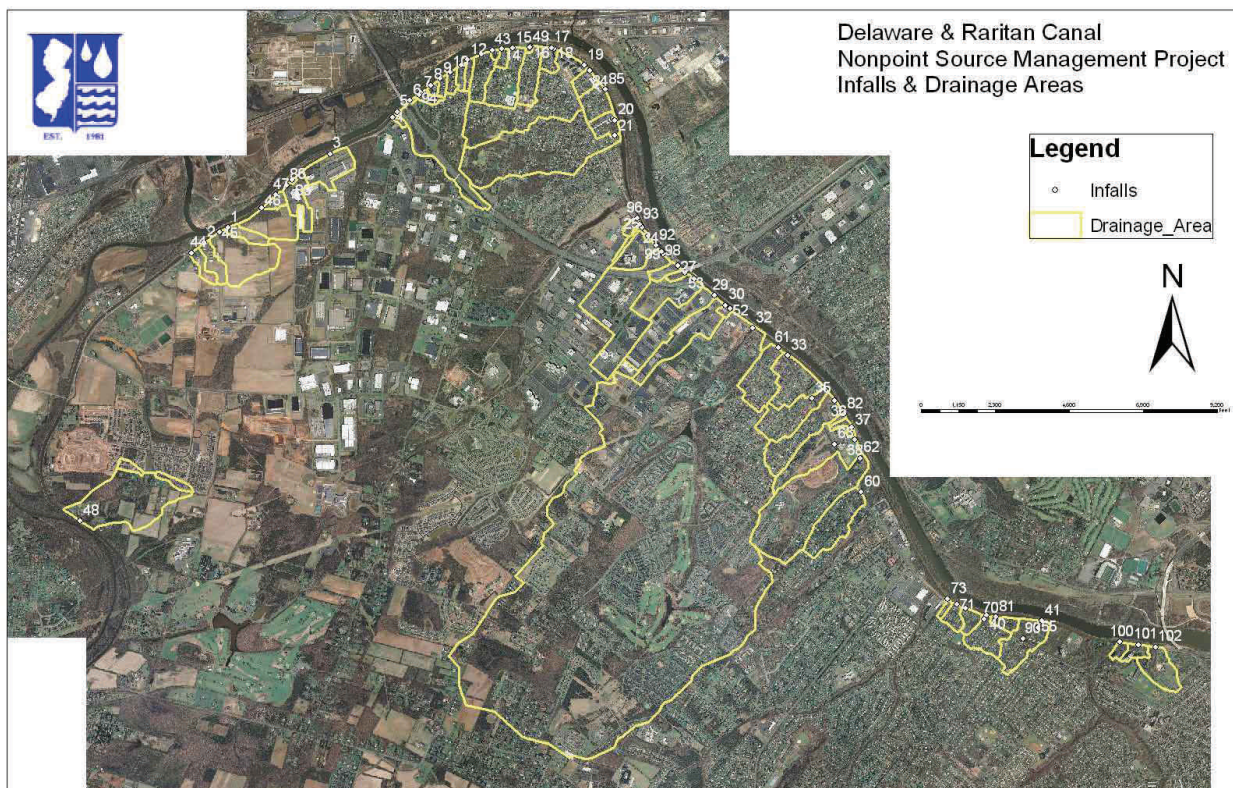
- Potable water supply source for ~600,000 people
- Significant recreational resource
- State & Federal Register of Historic Sites
- NJ State Park

Basis for Project

1999 USGS study: turbidity does not decrease between 10 Mile Lock and Landing Lane as expected
Settling solids are replaced by turbidity from influent streams and discharges

Project Study Area

- Amwell Road to Landing Lane
- Franklin Township & South Bound Brook Borough
- ~11 miles of Canal



Project Timeline & Tasks

2002-2005: Development of watershed restoration plan:

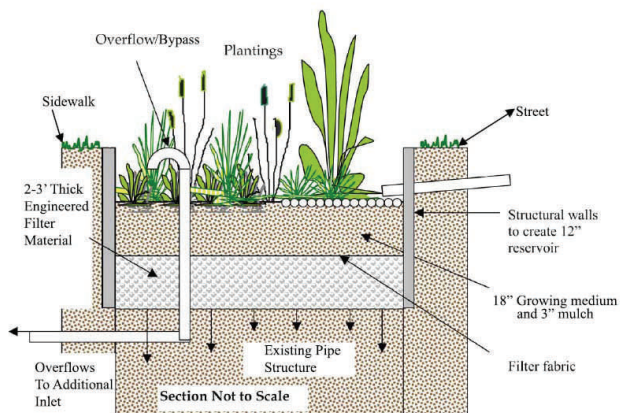
- Identify infalls
- Delineate drainage areas
- Estimate pollutant loads
- Recommend best management practices

2006-present:

Implementation of top 15 projects with Section 319(h) and Corporate Business Tax Funding from NJDEP



Infall 38
Conversion from dry basin to wet basin



Vegetated Inlet—BMP recommended for Infall 21 drainage area

For more information, contact:
Kathy Hale,
New Jersey Water Supply Authority
khale@raritanbasin.org
(908) 685-0315 x228
www.raritanbasin.org